

SAM4S Titan S

Touch Screen POS System

- Industrial Quality LED Display 15" True Waterproof Flat Front Panel.
- 15" TFT LED, LVDS 1024 x 768 (XGA LCD) PCT Projected Capacitive Touch Technology Supports Multi-Touch.
- Intel Celeron N2807 Dual Core (S160) & N3160 Quad Core (S260) Fanless DDRIII 1 Slot 2GB Memory up to 8GB.
- SATA-II 2.5" 64GB SSD.
- 1 x 10/100/1000 Mbps LAN.



SAM4S
Dual & Quad
Core Faster
Processors



- Vibrant 15" PCT Display.



- Easy Access to SSD.



- Simple Structure Design.



- Noise-Free Fanless CPU.

| SAM4S TITAN S160 & S260 SPECIFICATION | | | |
|---------------------------------------|--------------|---|---|
| MODEL | | TITAN S160 | TITAN S260 |
| System | CPU | Intel Celeron N2807 (Dual Core up to 2.16Ghz.) | Intel N3160 (Quad Core up to 2.24Ghz.) |
| | RAM | DDR III 1 Slot (up to 4GB) | DDR III 1 Slot (up to 8GB) |
| Display | LCD | 15" LED Backlight LCD (1024 x 768) | |
| | Touch | PCAP Touch | |
| Interface | Serial | 3 Ports (RI/5V/12V Bios Selectable) (1 Port: RS-422/485 (Jumper Selectable)) | |
| | USB | 2.0: 6 Ports | 2.0: 4 Ports/3.0 2 Ports |
| | Ethernet | 1 Port | |
| | VGA | 1 Port | |
| | Drawer | 1 Port/2CH (12V/24V Selectable) | |
| | Audio | 1 Port (Line Out) | |
| Optional | MSR | 1/2/3 Track Support (USB) | |
| | Rear Display | VFD (20CH x 2 Line, 256 x 32 Graphic) LCD (9.7" 15" Touch Option) | |
| | Wall Mount | VESA Wall Mount | |
| | Stand | V Stand | |
| Software | OS | POSReady7/Windows 8.1 Industry Retail/Windows 10 IoT Enterprise | |
| Power Supply | | DC 12V/5A (60W) | |
| Dimension | | 379(W) x 264(H) x 362(D)mm | |
| Weight | | 6.0Kg | |
| Colour | | Black (Titan S160) & White/Black (Titan S260) | |
| Certifications | | CE/FCC/CB/CTUVus (NRTL)/RoHS/IP55 Rated | |



SAM4S

YOUR LOCAL DEALER IS

International POS Ltd
3.3.1 Storey House
White Cross Ind Est
South Road
Lancaster
LA1 4XQ

01524 388811



HOSPITALITY



RETAIL



HEALTHCARE &
PHARMACY



HEALTH &
BEAUTY



CATERING &
SCHOOL MEALS

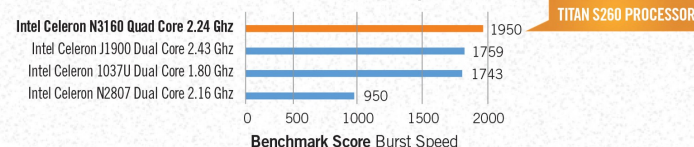
SAM4S Titan S

Touch Screen POS System



SAM4S
Water Resistant
Front Touch
Panel

CPU Benchmark Comparison



Key Features - At A Glance



Latest PCT touchscreen technology for enhanced definition and durability.



Sam4s
Water Resistant
Front Touch
Panel

Sam4s Titan S

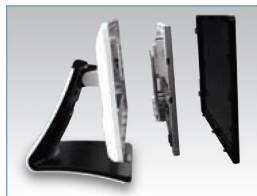
Touch Screen POS System



New styling and compact, multi-function EPOS terminal, fitted with the Intel Celeron processors combining speed with efficiency.



- Easy Access to SSD.



- Simple Structure Design.

The Sam4s Titan S Series offers vibrant & precise 15" projected capacitive multi-touch display and is extremely durable in most environments including withstanding water contact, dust & grease (IP55 Rated).

The Sam4s projected (PCT) will activate with either a bare finger or a capacitive stylus preventing users from using pens, credit cards or sharp objects which potentially would reduce the life expectancy of resistive touch panels. In addition the screen has a more vivid & crisp colour enhancing the quality of the POS user interface.



Use LCD Rear Customer Displays for Food & Drink Promotions like 'Happy Hour', 'Kids Eat Free' etc.

Incorporating the latest Intel Celeron fanless processors' combines speed and efficiency along with quiet operation the Sam4s Titan S is one of the fastest & quietest PC POS terminals in its class. Coupled with its on board 64GB SSD, ensures that the solid state drive remains dust free & ingress free, ideal for harsh retail & hospitality environments.

With its spill proof multi-touch bezelless display, ergonomic design and innovative base, the Sam4s Titan S is one of the most stylish and aesthetically pleasing point of sale terminals in its class. With either traditional stand or VESA options for wall & pole mount provides greater flexibility of installation.

The Sam4s Titan S Touch screen is supplied with an external power adaptor for

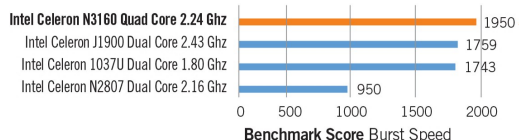
ease of replacement. A reliable & accessible system the Sam4s Titan PC POS terminal has many added benefits making it excellent value for money & a great investment as your POS equipment.

Key Features:

- Industrial Quality LED Display 15" True Waterproof Flat Front Panel.
- 15" TFT LED, LVDS 1024 x 768 (XGA LCD) PCT Projected Capacitive Touch Technology Supports Multi-Touch.
- Intel Celeron N2807 Dual Core (S160) & N3160 Quad Core (S260) Fanless DDRIII 1 Slot 2GB Memory up to 8Gb.
- SATA-II 2.5" 64GB SSD.
- 1 x 10/100/1000 Mbps LAN.
- Easy Access Design Provides Easy Installation & Maintenance.
- External Power Adaptor.



CPU Benchmark Comparison

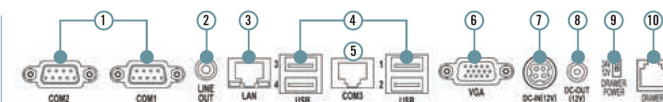


- Small Footprint.
- Vesa Wall or Pole Mountable.
- Windows POSReady 7 Option Windows 10 Enterprise.

Options Including:

- Sam4s 2-Line VFD Customer Display.
- Sam4s 9.7" Rear LCD Customer Display.
- Sam4s 15" Rear LCD Customer Display.
- Slimline MSR Reader.
- External Magnetic Dallas.
- External RFID Reader.
- Windows POSReady7, Windows 10 Enterprise & Linux.

"The Sam4s Titan S Series- Combining Style, Performance & Reliability"

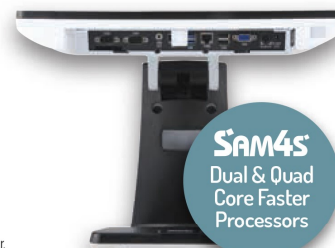


SAM4S TITAN S160/S260 CONNECTIVITY

1. D-SUB 9 Pin COM (Serial) Port. Connect external RS232 devices such as printers & scanners.
2. Audio port (Microphone/Line-Out/Line-In). Connect audio equipment such as speakers.
3. RJ-45 LAN (Ethernet) port. 100/1000Mbps Ethernet Connection.
4. USB 2.0 Port. Connect external USB devices such as USB Barcode Scanners, USB Printers.
5. RJ-45 8 Pin COM (Serial) Port. Connect external RS232 devices such as printers & scanners.
6. D-SUB 15 Pin VGA port. Connect an external monitor.
7. DIN 4 Pin 12V DC Input (Input power connection) Jack is connected to the external power adaptor.
8. 2.5 12V DC Output. Power output for external devices such as a Rear Display.
9. Drawer Voltage Switch. Set as either 12v/24v for cash drawer type.
10. RJ-11 6 Pin Cash Drawer port. Connection for cash drawer.

NOT ILLUSTRATED

HDD/SSD Slot (Rear Cover) Connect Internal 2.5" HDD/SSD. USB Ports (Rear Cover) Connect external USB devices such as USB Barcode Scanners, USB Printers. MSR Reader (Right Side) Fit optional Magnetic Card Reader.



Sam4s
Dual & Quad
Core Faster
Processors



The Sam4s Titan S160 & S260 come with optional 2-Line VFD, 9.7" & 15" LCD Rear Customer Displays. A VESA wall mount adaptor for counter top or wall mount installations is also available.