



International POS Ltd



Fashion Retail Piece of Mind



EPOS
Stock Control
E-Commerce Solutions
Customer Relations Management

FASHIONE-Single Store

FASHIONE – Barcode & Ticketing

- User definable barcode information & layout
- Supports most Barcode label & ticket sizes
- Print to standard A4 & dedicated ticket printers
- Apply images to barcode labels & tickets
- Customise your own unique barcodes



COMPANY LOGO **Ticket Printer**

Move the mouse over an image and then left-click the mouse

Field 1:	Root PLU	Full PLU	Style	Colour	Size	Description	Department	Retail Price	Quantity
Sub-Dept.	00000253	0000025302	BB881	WHITE	26"	CHEEKY MOM GIRLS		29.00	1
Field 2:	00000268	0000026801	BM5815	PINK	NEW BORN	BABY BIB SETBABY		28.00	1
Season	00000283	0000028302	CHD311	BLUE	4-6 YEARS	JEAN TOP SETBOYS		42.00	1
Field 3:	00000286	0000028601	CHD311	CREAM	0-3 MONTHS	BABY MATCH BOYS		42.00	1
Style	00000009	0000000901	CLD JN16L	BLACK	40 /MEDIUM	STRIPED FIT SHIRTS		56.40	1
Field 4:	00000004	0000000401	CLD JN16L	BROWN	40 /MEDIUM	STRIPED FIT SHIRTS		56.40	1
Root PLU	00000226	0000022601	CLOWN BOOT	BLACK	5	KNEE LEATHEIBOOT		79.95	1
Field 5:	00000236	0000023603	CLOWN BOOT	BROWN	7	KNEE LEATHEIBOOT		79.95	1
Brand Label	00000231	0000023102	CLOWN BOOT	CREAM	6	KNEE LEATHEIBOOT		79.95	1
Print:	00000252	0000025200	FIN OL9	CREAM	ONE SIZE	FINGERLESS FISHING		14.98	1
Printer:	00000004	0000000402	FLWD17	BLACK	27	S/LESS DRES DRESSES		65.39	1
Standard	00000091	0000009103	FLWD17	BLUE	29	S/LESS DRES DRESSES		65.39	1
	00000105	0000010505	FLWD17	RED	33	S/LESS DRES DRESSES		65.39	1
	00000090	0000009002	FLWD17	WHITE	27	S/LESS DRES DRESSES		65.39	1
	00000133	0000013303	FX65 DER	PINK	29	JERSEY S/LESS DRESSES		119.19	1
	00000140	0000014003	FX65 DER	RED	29	JERSEY S/LESS DRESSES		119.19	1
	00000126	0000012603	FX65 DER	WHITE	29	JERSEY S/LESS DRESSES		119.19	1
	00000012	0000001201	KPBA 991	MULTI	32 /SMALL	MULTI MINI DRESSES		69.91	1
	00000047	0000004702	KPMS12	BLACK	32	CASUAL COT TROUSERS		89.96	1
	00000155	0000015500	KPMS12	CREAM	28	CASUAL COT TROUSERS		89.96	1
	00000155	0000015506	KPMS12	CREAM	28	CASUAL COT TROUSERS		89.96	1
	00000070	0000007003	LKX61TY	BLACK	29	BELL BOT JEANS		60.28	1
	00000063	0000006306	LKX61TY	NAVY	35	BELL BOT JEANS		60.28	1
	00000021	0000002100	LMT CSP7	BLACK	X SMALL	ZIPPED CARDIGANS		54.05	1
	00000031	0000003101	LRFON13	BLACK	40 /MEDIUM	LEATHER MACJACKETS		120.03	1
	00000215	0000021505	MC850	BLACK	9 1/2	CASUAL BOO' CASUAL		129.95	1
	00000204	0000020403	MC850	BROWN	9 1/2	CASUAL BOO' CASUAL		129.95	1
	00000204	0000020409	MC850	BROWN	11	CASUAL BOO' CASUAL		129.95	1

Barcodes: 40

FASHIONE – Stock Taking

- Step by Step Global or Partial Stock Checks
- Stock Evaluation & Discrepancy Reports
- Universal BHT Compatibility (via CSV files)



COMPANY LOGO **Stock Count**

Move the mouse over an image and then left-click the mouse

Your Stock Count Reference: **STOCK COUNT 13.03.2007** Stock Count Date: 13/03/2007
Example: STOCK COUNT 10.01.2006

PLU OR BARCODE:	STOCK QUANTITY:
0000127502	10
0000127505	6
0000127501	0

Total Stock Count: 16



The right solution for you....

Is your business too small for Epos?

The answer is No...

Fashion provides your business with crucial information that when harnessed will help you make more informed decisions about merchandising, stock holding and customer relations management (CRM).

These types of businesses include:

- Men & Women's Fashion
- Maternity & Kids Clothing
- Footwear & Accessories
- Sportswear & Equipment
- Specialist Clothing Retailers
- Outdoor Activities
- Lingerie & Hosiery
- Soft & Household Furnishing
- Giftware Retailers



FASHIONE-Single Store



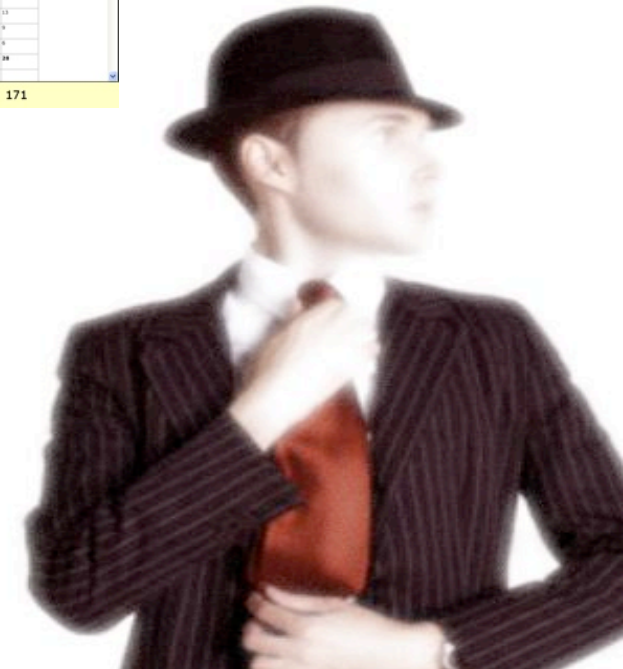
FASHIONE – Back Office

Simple Control for your business

Features:

- Stock Information by Style, Colour, Size, Season & Supplier.
- SQL Reports suite provides Driven stock and sales analysis.
- Custom reporting for data mining.
- Four Step Stock Taking process.
- Multi-Level Stock Grouping with Season & Brand / Supplier label reporting & analysis
- Suggestive Re-ordering with min / max stock level adjustment.
- Promotions and discount control
- Customer analysis Processing
- Write Off, damaged Stock and Return to Supplier Management
- Customer tracking provides history & direct email and mail marketing.
- Customer Loyalty, direct discounts, Deposit payments and Accounts.
- Unlimited user groups and permissions for operators.
- Flexible barcode printing.

ROOT PLU	SUPPLIER	STYLE	DESC	COLOR	SEPT	SUB-DEPT	COPT	SETEL	SA	SH	SI	SM	SN	SO	SP	ST	STL	STW	TOTAL																
000000	000000	000000	JACKETS	BLACK	BOYS	JANES	000	000	0	0	0	0	0	0	0	0	0	0	0																
000000	000000	000000	JACKETS	DEEP BLUE	BOYS	JANES	000	000	0	0	0	0	0	0	0	0	0	0	0																
000000	000000	000000	JACKETS	TENNIS	BOYS	JANES	000	000	0	0	0	0	0	0	0	0	0	0	0																
000000	000000	000000	JACKETS	NAVY	BOYS	JANES	000	000	0	0	0	0	0	0	0	0	0	0	0																
TOTALS																			0	0	0	0	0	0	0	0	0	0	0	0	0	0	0	0	0



FASHIONE-Single Store

FASHIONE – E-Commerce & Websites

E-commerce solutions will provide your business with a secondary sales channel allowing customers to purchase your products through the internet, anywhere in the world, at any time and is not restricted to opening and closing times, providing you with potential trade coverage 24 hours a day, 7 days a week and 365 days of the year.

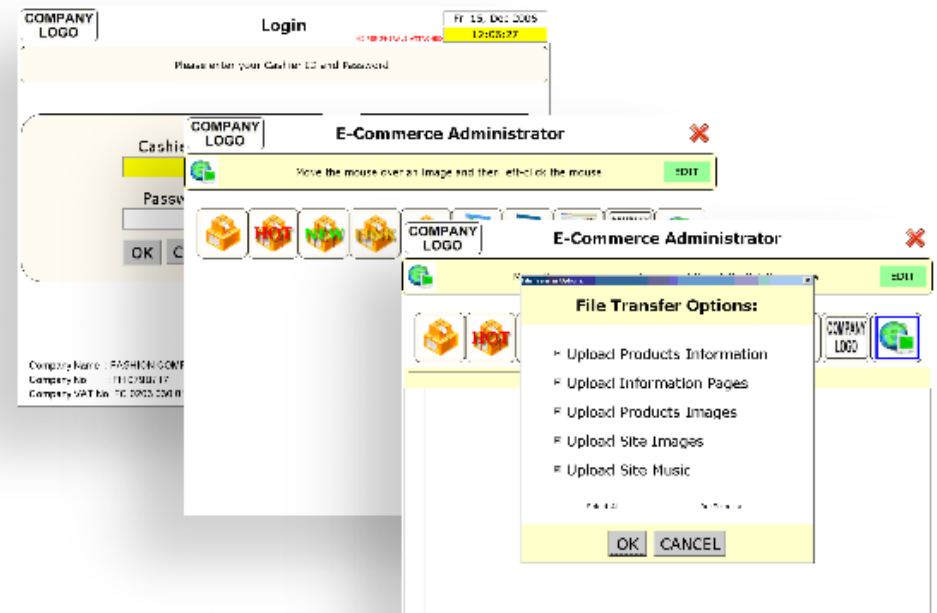
Fashione E-commerce will provide you the necessary software to manage, maintain and process sales from the internet and is integrated with Stock inventory that will produce sales and stock reports. All you need is a broadband connection, a domain name registration and website hosting.

FASHIONE – Finding the Right Site for You.....

Our templates site features hundreds of templates spanning through all fields of industry and business. The templates themselves have been created by a number of professional website designers.

www.fashione.co.uk/templates

The first step when creating a new website that integrates with our system is to choose one of the templates found on the site. These basically produce the foundations (look, feel, style) of a new website.



Ecommerce & Websites: Creating an e-commerce site can be a fairly quick and simple process with the right organizational skills and management that is why when choosing to go with our fashion e-commerce package, attractive websites can be created in double-quick time.

How We Work: To make the process of creating an e-commerce site as sleek as possible, we have developed a number of web templates to accommodate various types of businesses, which can be viewed at our own templates website that currently features over 1,000 different templates, from fashion retail, to veterinarian practices. Generally, clients browse the site and select a favourite template, which once chosen, we integrated our databases. Then on completion, the site almost becomes self-sufficient and requires minimal work and adjustment.

Templates can be found here: www.fashione.co.uk/templates

A full e-commerce site includes:

- Flash Animated images
- Default static images
- Product pages
- Shopping carts
- Multiple images (by colour) per item
- Hot products, New products, Top products & Linked product pages
- Online editing suite
- Online customer login/accounts area and tracking
- System customer tracking
- Online music & audio
- Customisable banners & backgrounds
- Price adjustments (by percentage)*
- Delivery charge (by percentage or set value)
- Site business information (includes: ordering, pricing & tax, payment, returns, privacy, sizing, security, delivery, terms & conditions, trademarks & copyrights, about us, contact us recruitment & store location)
- Sale invoice printing module
- E-commerce sales reports



***System driven**

What you will need – A typical website that includes a standard semi flash template requires the following:

Site Template:	Standard Semi Flash templates (see web temple site)
Domain Name:	.co.uk / .com / .ltd.uk / .net Domain Addresses valid for two years
Site Hosting:	750mB storage space / 10 email accounts / search engine submission
Site Integration:	Development of the above features into the chosen template
Optimisation:	Varies depending on level of ranking Vs market and customer requirements*



*Optimisation techniques vary from business to business, tailor made techniques can be discussed further with high ranking optimisation achieved through combined keyword advertisement campaigns provided by the leading search engines on a per click basis, further details are available upon request.